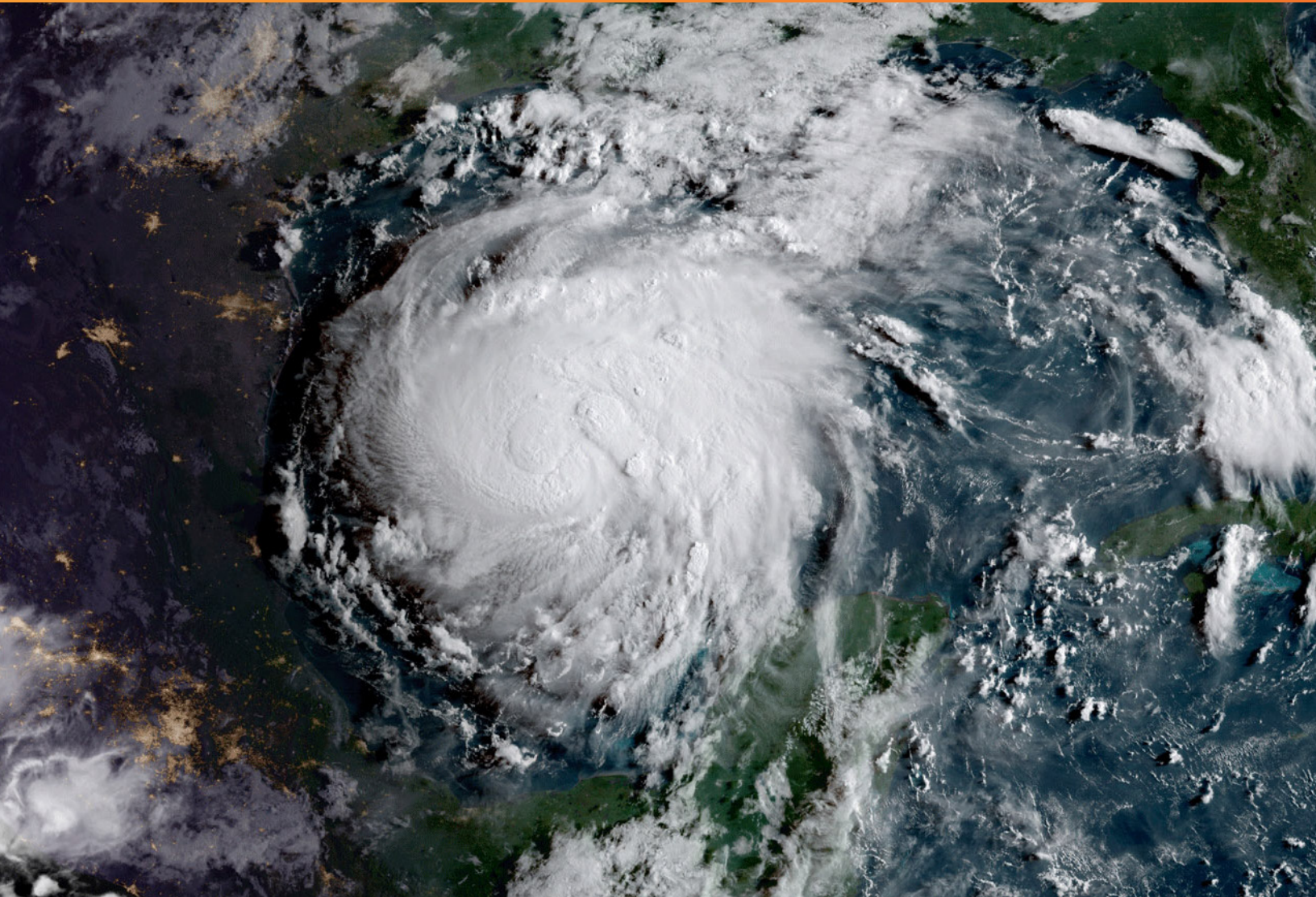




HURRICANE PREPAREDNESS GUIDE



HOW TO REPORT OUTAGES



MVEC App



magicvalley.coop



866-225-5683

STORM WARNINGS

& TERMS TO KNOW



TROPICAL STORM WATCH

Tropical storm conditions are possible and may affect your area within the next 48 hours.



TROPICAL STORM WARNING

Tropical storm conditions are expected in your area within the next 36 hours.



EYE

This is the clear center of the storm that arrives with calmer conditions. But remember, an eye passing over you signals that the storm is only half over.



RAIN BANDS

Bands coming off the cyclone that produce severe weather conditions, such as heavy rain, wind and tornadoes.



HURRICANE WATCH

Hurricane conditions are possible in the area. Watches are issued up to 48 hours in advance of the anticipated storm-force winds.



HURRICANE WARNING

Hurricane conditions are expected in the area. Warnings are issued up to 36 hours in advance of the storm.



EYE WALL

The area surrounding the eye contains some of the most severe weather of the storm, with the highest wind speed and heaviest precipitation.



STORM SURGE

A deadly rush of ocean of Gulf water that occurs when a storm makes landfall. This often floods coastal areas and sometimes areas further inland.



MVEC App



magicvalley.coop



866-225-5683

POWERING UP

AFTER AN OUTAGE

1. High-Voltage Transmission Lines:

Transmission towers and cables that supply power to transmission substations (and thousands of members) rarely fail, but when damaged, these facilities must be repaired before other parts of the system can operate.

2. Distribution Substation:

A substation can serve hundreds or thousands of consumers. When a major outage occurs, line crews inspect substation to determine if problems stem from transmission lines feeding into the substation, the substation itself or if problems exist further down the line.

3. Main Distribution Lines:

If the problems cannot be isolated at a distribution substation, distribution lines are checked. These lines carry power to large groups of consumers in communities or housing developments.

4. Tap Lines:

If local outages persist, supply lines (also known as tap lines) are inspected. These lines deliver power to transformers, either mounted on poles or placed on pads for underground service, outside businesses, schools and homes.

5. Individual Homes:

If your home remains without power, the service lines between a transformer and your residence may need to be repaired. Always call to report an outage to help line crews isolate local issue.



MVEC App



magicvalley.coop



866-225-5683

2020 HURRICANE TRACKING CHART

(Source: www.nhc.noaa.gov)



MVEC App



magicvalley.coop



866-225-5683

2020 NAMES:

Arthur
Bertha
Cristobal

Dolly
Edouard
Fay

Gonzalo
Hanna
Isaias

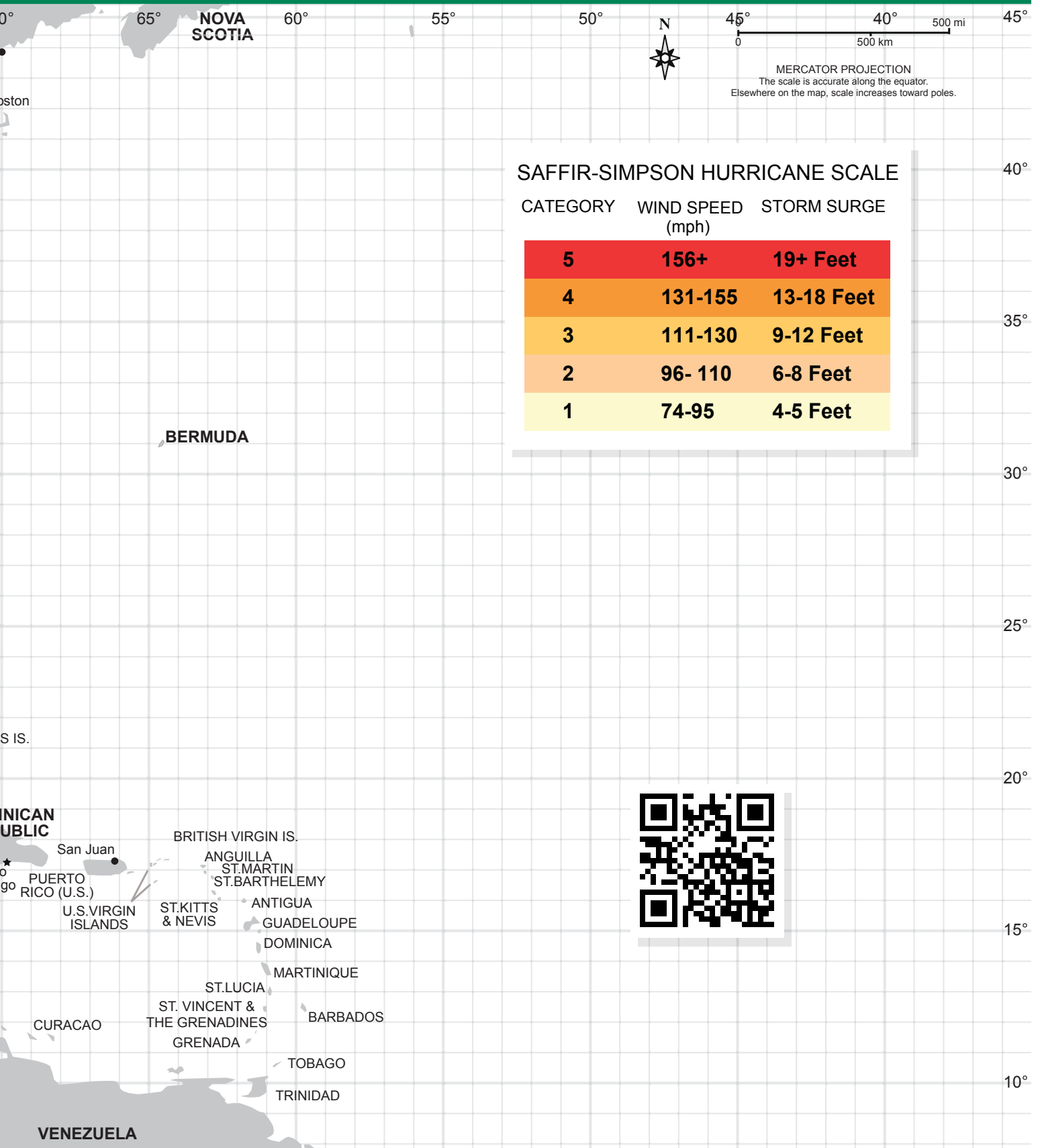
Josephine
Kyle
Laura

Marco
Nana
Omar

Paulette
Rene
Sally

Teddy
Vicky
Wilfred

Source: <https://www.nhc.noaa.gov/aboutnames.shtml>



SAFFIR-SIMPSON HURRICANE SCALE

CATEGORY	WIND SPEED (mph)	STORM SURGE
5	156+	19+ Feet
4	131-155	13-18 Feet
3	111-130	9-12 Feet
2	96- 110	6-8 Feet
1	74-95	4-5 Feet



MVEC App



magicvalley.coop



866-225-5683

EMERGENCY KIT

CHECKLIST

FOOD

- ☐ 7-day supply of non-perishable food
- ☐ Hand-operated can opener
- ☐ Disposable plates, cups, utensils
- ☐ Napkins or paper towels
- ☐ Cookware to boil water
- ☐ Propane tanks for your grill so you can cook

WATER

- ☐ Three gallons of water per person, per day (FEMA recommends a 5-day supply)

FIRST AID

- ☐ Fully stocked first aid kit
- ☐ Additional prescriptions or essential medicines
- ☐ List of current medications and allergies
- ☐ Sunscreen
- ☐ Insect repellent
- ☐ Fire extinguisher
- ☐ Extra cash in case ATMs are down

LIGHTING

- ☐ Flashlights and extra batteries
- ☐ A large light source (e.g. fluorescent lantern)
- ☐ Utility lighter
- ☐ A wrench or set of pliers (to turn off utilities)

COMMUNICATION

- ☐ Battery-powered AM/FM radio
- ☐ NOAA hazard-alert radio
- ☐ Car or emergency charger for mobile devices
- ☐ Small notepads and pencils
- ☐ Games and activities that don't require electricity

BABY NEEDS

- ☐ Bottles, formula, and/or powdered milk
- ☐ One-week supply of diapers
- ☐ Baby wipes and diaper rash ointment

TRANSPORTATION

- ☐ Maps of local and state roads
- ☐ Directions to nearby shelters
- ☐ Spare tire or tire patch kit
- ☐ Emergency roadside flares or triangles
- ☐ List of local services and their contact info

SANITATION & PERSONAL CARE

- ☐ Trash bags
- ☐ Disinfectant wipes or gels
- ☐ Toothbrushes and toothpaste
- ☐ Toilet paper
- ☐ Spare set of clothes and shoes for each person
- ☐ At least one blanket per person
- ☐ Personal, feminine care items
- ☐ Soaps and shampoos
- ☐ Dust masks, plastic sheeting, duct tape

PET NEEDS

- ☐ One week of food and water
- ☐ Leash and a crate or carrier
- ☐ Bed, dishes, toys
- ☐ Any medications
- ☐ Battery-operated air pump for aquarium
- ☐ Vet's contact information



HURRICANE PREPARATION

DISASTER SUPPLIES KIT



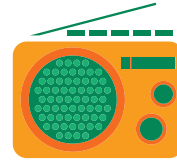
One gallon of **CLEAN DRINKING WATER** per individual (and pets) for 3-7 days. Fill bathtubs with water for cleaning. Save used soapy water to flush toilets.



NON-PERISHABLE FOOD to last 3-7 days for individuals and pets.



FIRST AID KIT plus a 3-7 day supply of any prescription medications.



BATTERY-POWERED WEATHER RADIO and extra batteries.



FULL GAS TANKS in your vehicles.

BE READY TO EVACUATE

Situations change. Prepare **A GO BAG** for each individual with you. Each Go Bag should be light and portable, carry an ID tag, and at least contain:

- Some food and water.
- A personal-sized first aid plus any prescription medicines.
- A flashlight, portable radio, fully charged cell phone.
- Emergency cash in small denominations and quarters for phone calls.

Your GO BAG bag should also contain important family documents (insurance, medical records, bank account numbers, social security card, pet care information) inside a watertight re-sealable plastic bag or container.

A GO BAG



HOW DO I KNOW IF I SHOULD EVACUATE?

Monitor weather reports about the oncoming hurricane threat. You should consider evacuating/leaving the area:

- **IF** you live on a barrier island with a history of storm surge damage.
- **IF** you live in a low-lying or flood prone area.
- **IF** you live in a mobile home in a coastal area.
- **IF** your home is in a coastal area and lacks hurricane structural reinforcing.
- **IF** you are vacationers with young or elderly dependents.
- **IF** local officials order or recommend that residents evacuate depending on expected storm severity.



MVEC App



magicvalley.coop



866-225-5683

EMERGENCY RESOURCES

Here's a list of resources available to assist you during a major storm. Keep the following contacts handy in case of an emergency.

► READY.GOV

Website: ready.gov

Phone: **1-800-FED-INFO**

► TEXAS HEALTH & HUMAN SERVICES

Website: 211texas.org

Phone: **211**

► TXDOT HIGHWAY CONDITIONS

Website: DriveTexas.org

► AMERICAN RED CROSS SOUTH TEXAS CHAPTER

Website: redcross.org

Phone: **(956) 423-0523**

Toll Free: **(800) 785-7851**

► FEMA

Website: fema.gov

Phone: **800-621-3362**

► NATIONAL HURRICANE CENTER:

Website: nhc.noaa.gov

In an emergency,
be sure to call **911**
for assistance.

During this hurricane season, Magic Valley wants to remind members that planning is the most important step to staying safe. Please take the measures included in this guide to prepare early and protect your home and family this hurricane season. Also, it's very important that your MVEC account is up to date with your current contact information, including phone number and address.

Preparing for hurricane season means preparing for the possibility of power outages during and after the storm.

HOW TO REPORT OUTAGES



1-866-225-5683



MVEC Connect App



magicvalley.coop

INFORMATION NEEDED TO REPORT OUTAGES:

Account number: _____

Address: _____

Phone number: _____

STAY INFORMED ABOUT OUTAGES



/MagicValleyEC



/MagicValleyEC



/ magicvalley_ec



magicvalley.coop



Magic Valley App



MVEC App



magicvalley.coop



866-225-5683